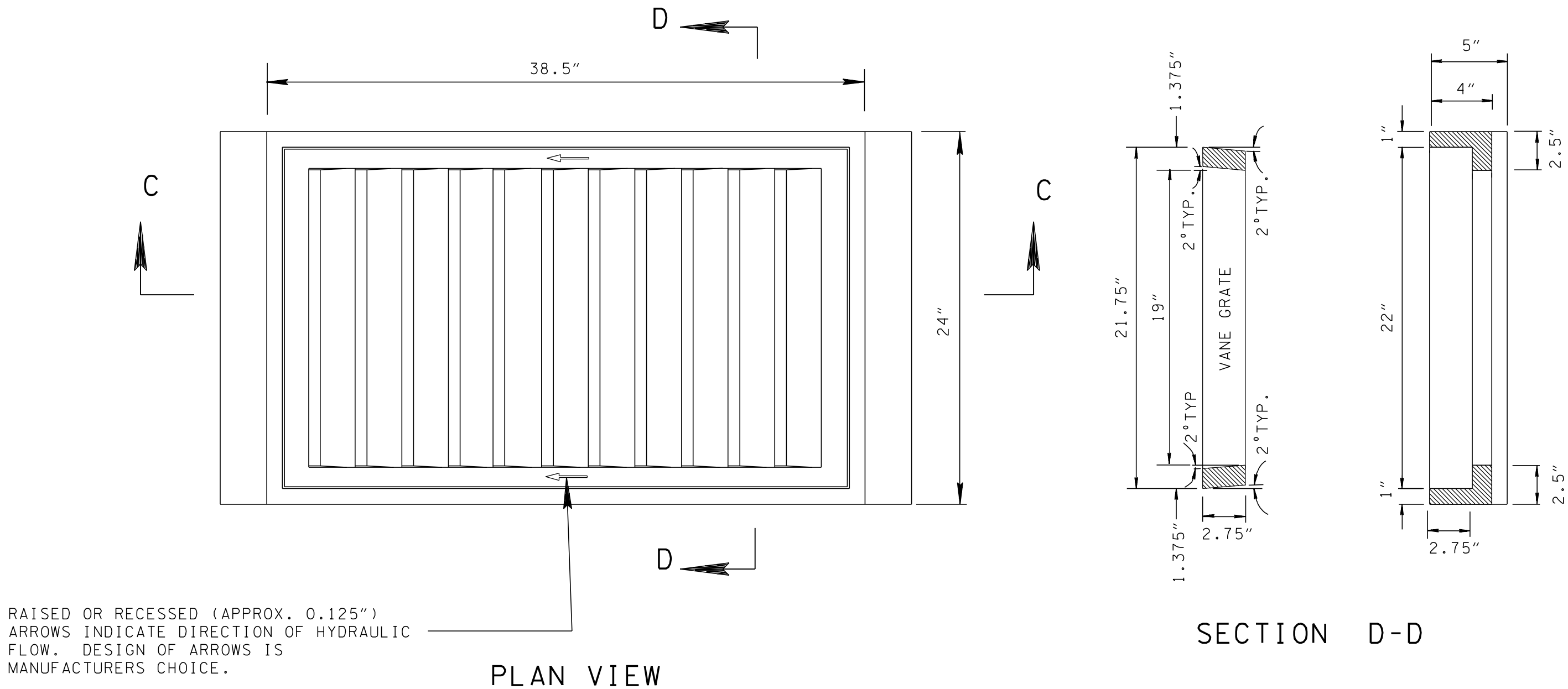
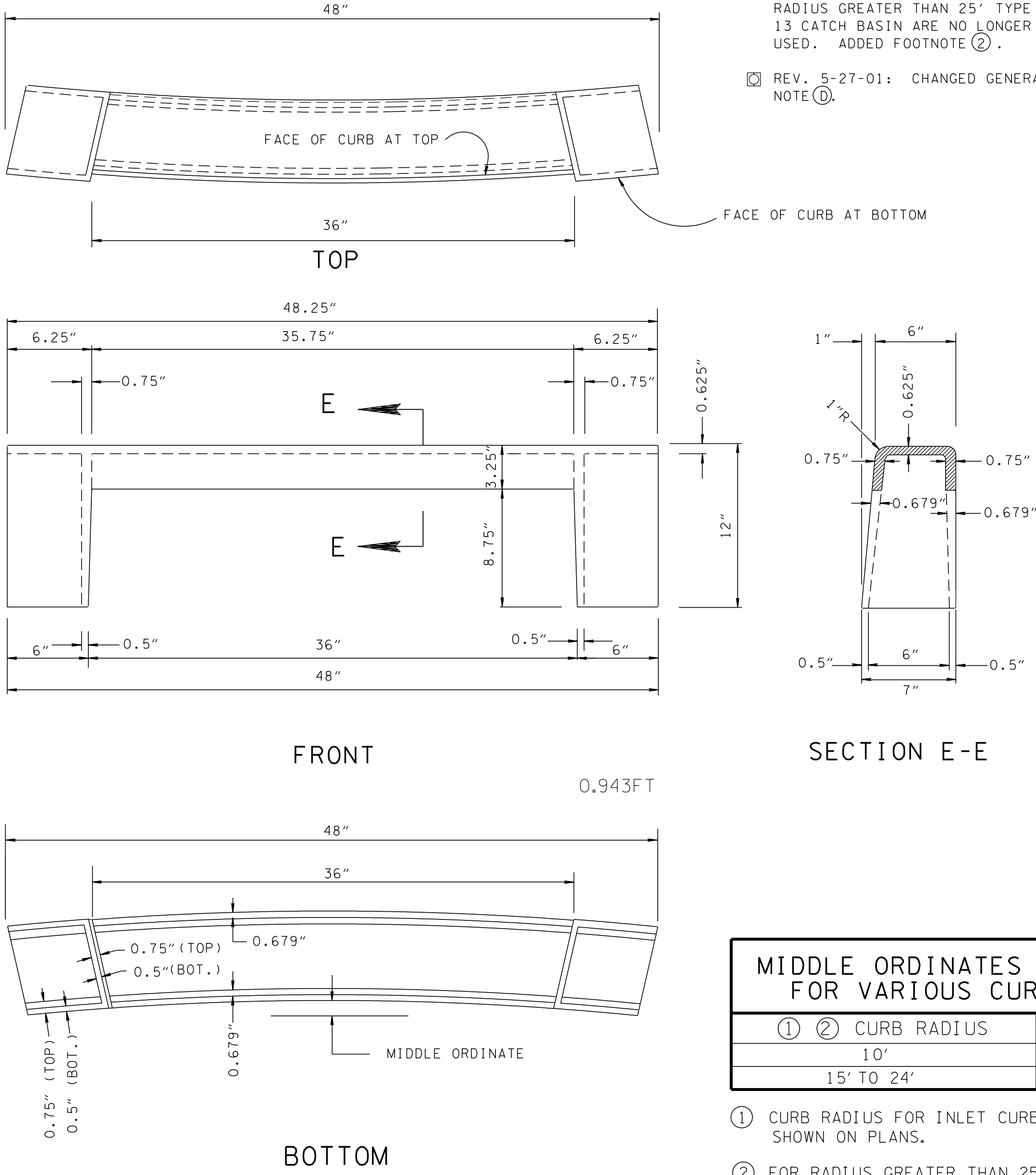


GRATE AND FRAME DETAILS



CURB INLET CASTING



- ☒ REV. 2-28-97: CHANGED GENERAL NOTE (A) .

☒ REV. 5-27-97: CHANGED DESCRIPTION IN RIGHT LOWER CORNER BLOCK.

☒ REV. 3-20-00: IN MIDDLE ORDINATES OF INLET CASTINGS FOR VARIOUS CURB RETURN RADIUS TABLES ELIMINATED 25' TO 35' CURB DATA, ON RADIUS GREATER THAN 25' TYPE 13 CATCH BASIN ARE NO LONGER USED. ADDED FOOTNOTE (2) .

☒ REV. 5-27-01: CHANGED GENERAL NOTE (D) .
- REV. 7-1-72: CHANGED DEPARTMENT NAME.

REV. 1-1-76: CHANGED DRAWING NO. FROM S-C-13a(68) TO D-CBC-13.

REV. 3-15-76: DELETED REFERENCE TO OLD DRAWING NUMBER AND SUBSTITUTED NEW DRAWING NUMBER.

☒ REV. 9-05-94: REDREW SHEET, REORGANIZED SHEET AND CHANGED FRAME AND GRATE FROM TYPE "C" TO "B". CHANGED DRAWING NO. FROM D-CBC-13 TO D-CBB-13.

☒ REV. 5-27-95: CHANGED GENERAL NOTE (A) .

MIDDLE ORDINATES OF INLET CASTINGS FOR VARIOUS CURB RETURN RADIUS	
① ② CURB RADIUS	MIDDLE ORDINATE
10'	2.406"
15' TO 24'	1.375"

- ① CURB RADIUS FOR INLET CURB CASTING TO MATCH RADIUS SHOWN ON PLANS.
- ② FOR RADIUS GREATER THAN 25' USE TYPE 12 CATCH BASINS.

GENERAL NOTES

- (A)

WHEN SIX (6) INCH NONMOUNTABLE CURB IS REQUIRED USE THIS DRAWING ON ALL VARIATIONS OF NUMBER 13 CATCH BASIN CONTAINED IN THIS SECTION OF THE STANDARD DRAWINGS.
- (B)

FOR CLEARNESS, ALL CORNERS ARE SHOWN ON THIS DRAWING BY STRAIGHT LINES WITH THE EXCEPTION OF THE 1" RADIUS AT THE TOP OF FACE OF CURB. ALL INSIDE CORNERS SHOULD BE MADE WITH 1/2" X 1/2" FILLETS OR 3/4" RADIUS FILLETS FOR EASE IN MOULDING.
- (C)

IF PAID FOR SEPARATELY CAST IRON USED IN CASTINGS IS TO BE PAID FOR UNDER ITEM NO. 611-03.04 GRAY IRON CASTINGS (CATCH BASIN) PER POUND.
- (D)

IF CATCH BASIN IS PAID FOR UNDER EACH, THEN COST OF CAST IRON USED IN CASTINGS IS TO BE PAID FOR UNDER THE ITEM BID FOR TYPE 13 CATCH BASINS. SEE VARIOUS STANDARD DRAWINGS FOR TYPE 13 CATCH BASIN FOR APPLICABLE PAY ITEMS.

WEIGHTS

(SINGLE GRATE CATCH BASIN)
FRAME ----- 265 LBS.
GRATE ----- 250 LBS.
CURB INLET ---- 155 LBS.
* TOTAL ----- 670 LBS.
* NOTE: WEIGHT OF TWO GRATES = 1,340 LBS.
* NOTE: FOR NO. 11 CATCH BASIN, DEDUCT 155 LBS. PER " GRATE ", SINCE NO CURB INLET IS REQUIRED.

FRACTION TABLE

1/8"	-	0.125"
1/4"	-	0.250"
3/8"	-	0.375"
13/32"	-	0.406"
1/2"	-	0.500"
5/8"	-	0.625"
11/16"	-	0.688"
3/4"	-	0.750"
13/16"	-	0.813"

☒ MINOR REVISION -- FHWA
APPROVAL NOT REQUIRED.

STATE OF TENNESSEE
DEPARTMENT OF TRANSPORTATION

TYPE 'B'
CAST IRON FRAME, GRATE
& NONMOUNTABLE INLET
DETAILS FOR NO.13
TYPE CATCH BASINS

1-1-68

D-CBB-13